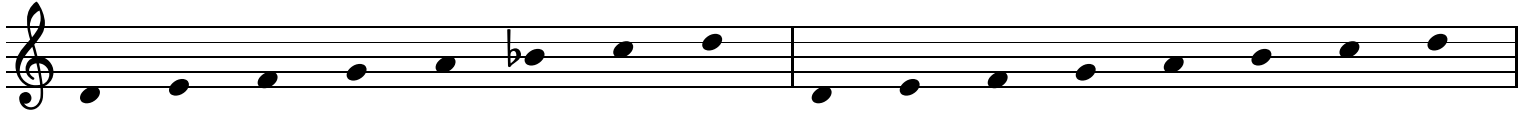


# Aeolische und Dorische Skalen

von allen 12 Grundtönen aus

Dm7 aeolisch

Dm7 dorisch



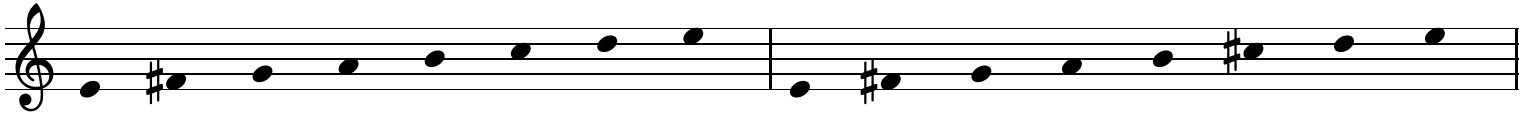
Ebm7 aeolisch

Ebm7 dorisch



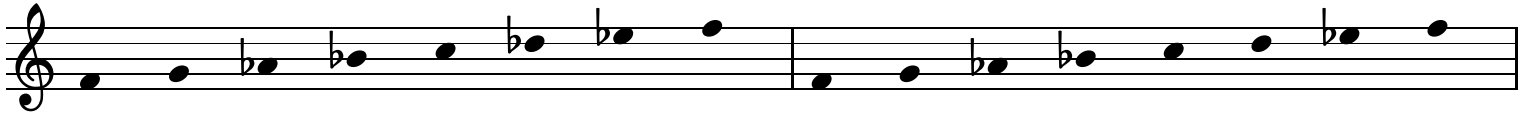
Em7 aeolisch

Em7 dorisch



Fm7 aeolisch

Fm7 dorisch



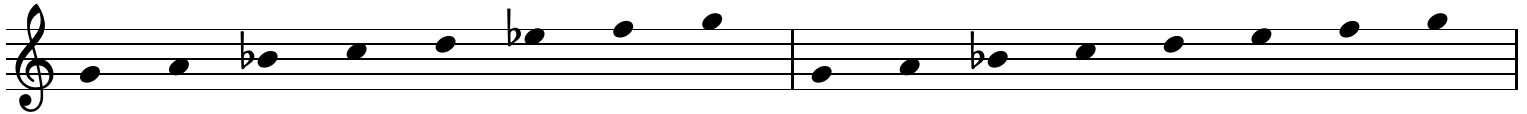
F#m7 aeolisch

F#m7 dorisch



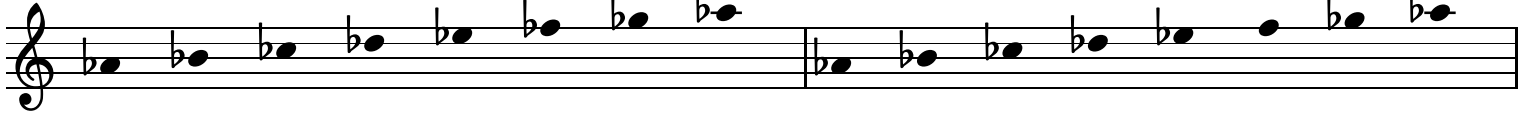
Gm7 aeolisch

Gm7 dorisch



Abm7 aeolisch

Abm7 dorisch



Am7 aeolisch Am7 dorisch

The first staff shows two musical scales. The first scale, labeled 'Am7 aeolisch', consists of the notes A, B, C, D, E, F, G, A. The second scale, labeled 'Am7 dorisch', consists of the notes A, B, C, D, E, F#, G, A.

Bbm7 aeolisch Bbm7 dorisch

The second staff shows two musical scales. The first scale, labeled 'Bbm7 aeolisch', consists of the notes Bb, C, D, Eb, F, G, Ab, Bb. The second scale, labeled 'Bbm7 dorisch', consists of the notes Bb, C, D, Eb, F, G, Ab, Bb.

Bm7 aeolisch Bm7 dorisch

The third staff shows two musical scales. The first scale, labeled 'Bm7 aeolisch', consists of the notes B, C, D, E, F#, G, A, B. The second scale, labeled 'Bm7 dorisch', consists of the notes B, C, D, E, F#, G#, A, B.

Cm7 aeolisch Cm7 dorisch

The fourth staff shows two musical scales. The first scale, labeled 'Cm7 aeolisch', consists of the notes C, D, Eb, F, G, Ab, Bb, C. The second scale, labeled 'Cm7 dorisch', consists of the notes C, D, Eb, F, G, Ab, Bb, C.

C#m7 aeolisch C#m7 dorisch

The fifth staff shows two musical scales. The first scale, labeled 'C#m7 aeolisch', consists of the notes C#, D, E, F#, G, A, B, C#. The second scale, labeled 'C#m7 dorisch', consists of the notes C#, D, E, F#, G#, A, B, C#.